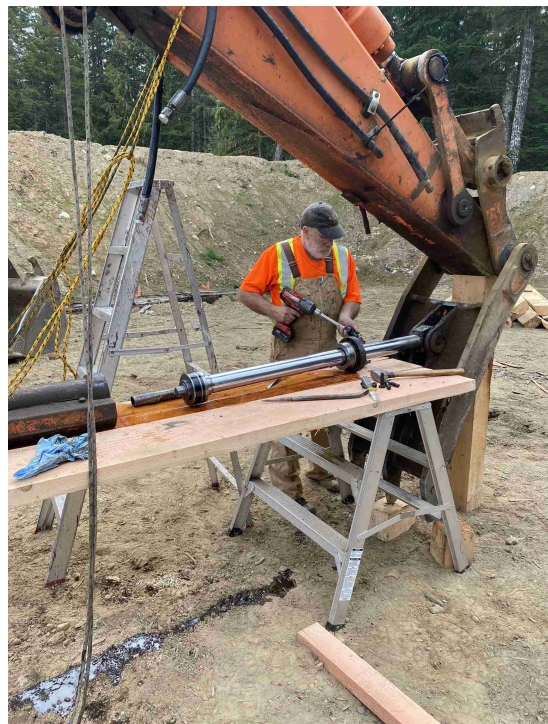
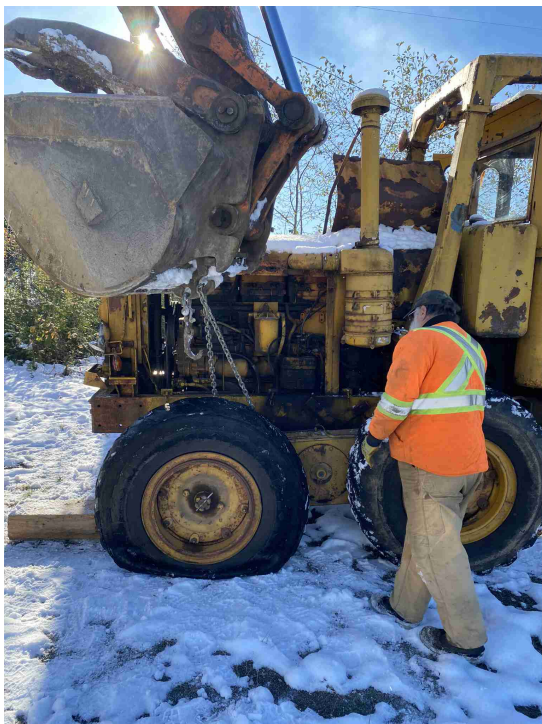
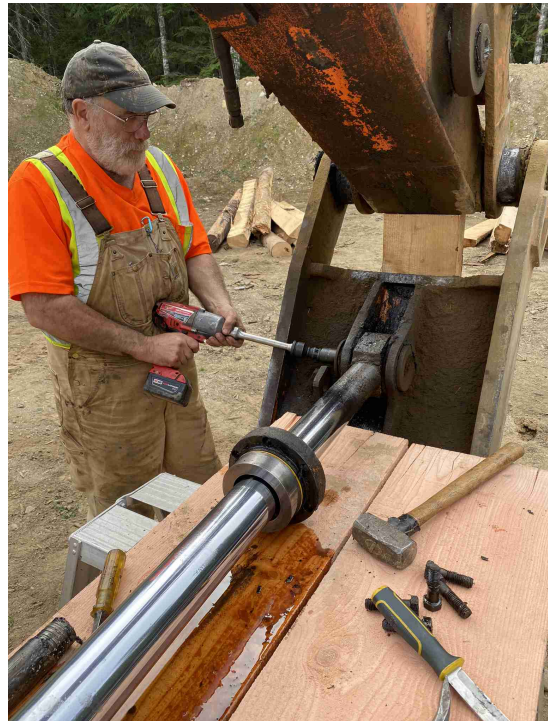


## Campbell River Gun Club Range Rebuild

To support the rebuilding efforts of our range a support effort was required to keep the machinery going. We have the use of many pieces of equipment reaching from articulated rock trucks to D8 to our grader. All this needs fuel and care. A system was set up transport fuel, hydraulic fluid, engine oil and water to the range. Most of the equipment was donated with the understanding that our volunteers with knowledge & experience will keep it running.



In order to organize the geometry of the range we had to survey the existing terrain and insure that the new range was built in accordance with the new building guidelines. The efforts of all volunteer crews had to be coordinated so it worked efficient and safe. All consumables and tools had to be supplied in time in the right amounts to have the volunteers work efficiently.



How to dismantle a bridge to survey the geometry of the overhead baffle? How to bring whole logs from the 600 range up to the 25 meter Pistol range? How to measure the height of every side berm? How to assure the 6 plus meter high backstops are really 6 meters high measured from the visible base to the 1.5 meter wide crest? What to do when rock truck tires are cut? How to take care of leaky hydraulic cylinders? How to adjust the belt tension on a Cat engine? How to build a bunker like structure to catch stray bullets? All these questions were worked out with the help of our volunteer team.