

# Campbell River Gun Club Society

Campbell River, British Columbia, Canada

## Range Operating Policy



*“Safety Through Education, Experience and Practice”*

The following are the Rules and Regulations of the Campbell River Gun Club (CRGC) shooting ranges.

This information is designed to provide all members with a written source for the range rules applicable to all of the CRGC shooting disciplines.

The CRGC reserves the right to amend these rules and regulations as deemed necessary to keep them current with the *Canada Firearms Act*.

The CRGC Range Orientation is mandatory for all new members.  
The information contained herein is mandatory knowledge for all members

<b>TABLE OF CONTENTS</b>		<b>PAGE</b>
<b>A. Property Use Policy</b>		
• Member etiquette		3
• Sign In		3
• Member Access to the Property		3
• Non-Member Access to the Property		3
• Hours of Operation		3
• Accident Reporting		3
<b>B. CRGC General Rules</b>		4
<b>C. General Range Rules</b>		5
• Safety		5
• Weather		5
• Acting Range Officer		6
• Accidents		6
<b>D. Range Use Rules</b>		7
<b>E. Rules Specific To Action Shooting Ranges</b>	(CFO R#1-6)	9
• Conduct of Fire		9
• Multiple Shooters/Users of a Bay		10
• Cartridge Restrictions		10
• Targets		11
• Clean Up		11
<b>F. Rules Specific to the 25 Metre Range</b>	(CFO R#7)	12
<b>G. Rules Specific to the 600 Yard Rifle Range</b>	(CFO R#13)	13
• Targets		13
• Cease Fire Procedures		13
• Range Flag and warning light System		14
• Clean up		14
<b>H. Rules Specific to the Shotgun Range</b>	(CFO R#8-12)	15
<b>I. Rules Specific to the Indoor Range</b>	(CFO R#16)	16
<b>J. Rules Specific to the 200 Metre Range</b>	(CFO R#14)	n/a
CLOSED- Under reconstruction		
<b>K. Rules Specific to the proposed Black Powder Range</b>	(CFO R#15)	n/a
Currently in proposal and planning stage.		
Appendix A	Range Descriptions.	18
Appendix B	Nearest Hospital and Emergency Numbers	20
Appendix C	CRGC Map and Site Plan	21

## **A. Property Use Policy.**

- **Member Etiquette**

1. The Campbell River Gun Club Society (CRGC) has general range rules as well as rules specific to the individual ranges and other areas of the property. Members and non-members must adhere to these rules.
2. Members are responsible for acceptable, considerate and non-abusive behavior from themselves, their family and guests at all times while on CRGC property. Abuse of the rules could result in the loss of privileges and/or membership.

- **Sign In**

1. During general range use, everyone without exception, **MUST** sign in with their membership number, initials and date.
2. During all special events everyone **MUST** sign in.
3. Additionally, guests shooting restricted or prohibited firearms **MUST** fill out the guest sign in form with name, address, phone number and PAL number (if they have one). Deposit these forms in the locked drop box to protect personal information.

- **Member Access to the Property**

1. When on CRGC property you **MUST** have your membership card with you at all times. Anyone found using the property without a membership card will be required to leave.
2. Range access is via locked gate. Members who have received the club orientation may purchase a key annually.

- **Non-Member Access to the Property**

Guest Policy:

1. Members may bring guests. Guest privileges are limited to 3 visits per year.
2. Guests **MUST** be under supervision of a member at all times.

- **Hours of Operation**

Shooting is permitted between sunrise and sunset, seven days a week.

- **Accident Reporting**

Accidents **MUST** be reported to the Executive Range Officer or CRGC President as soon as possible.

## **B. CRGC General Rules.**

1. Absolutely no consumption of alcohol or cannabis on any shooting range. Anyone that appears to be impaired for any reason while using the ranges will be asked to leave the property.
2. Absolutely no use of illegal drugs on CRGC property.
3. Members are not to loan their gate key or membership cards at any time. **Range Safety Officers (RSOs) and club directors** may require you to provide proof of identity to ensure that it is your membership card. Membership cards displayed by someone other than the owner are subject to seizure.
4. Speed limits on CRGC property are to be followed for the safety of members and families.
5. All pets must be kept under control at all times. Please clean up after your pet.
6. Abuse of the property, facilities and equipment is not acceptable.
7. Dumping of garbage of any kind is not permitted. Food waste should not be placed in the garbage as it attracts wild animals.
8. Members are not permitted to remove materials or equipment from the property without receiving the prior approval of the Executive Range Officer or other club Director.
9. Garbage and recycling containers are only for items generated as a result of the use of CRGC property. Garbage and recyclables are not to be brought from off site for disposal in club bins. Members are encouraged to take their garbage and recyclables home with them if possible.
10. Facilities are to be left as clean as, or cleaner than you found them.
11. Water barrels can be found at each range for fire suppression.
12. All facility use is 'At Your Own Risk.'

## C. General Range Rules.

The General and Range Specific Rules are for the purpose of general shooting at the club ranges when no sanctioned event is taking place. Specific rules are posted at each range. If an official competition, match or section practice is held on any range and that range is closed to general use, the official match rules apply and the Match Director/Section Director assumes the responsibility of Range Safety Officer for the event.

### • Safety

1. No person may use a CRGC shooting range for the first time without first familiarizing themselves with the safety rules posted on that range.
2. New members will not be permitted to use the range without direct supervision of an experienced member until they have completed the Range Orientation Program.
3. Members are responsible for ensuring their guests have been informed of the safety rules for the range to be used before they start shooting.
4. **Safety Is Everyone's Responsibility!** If you see someone not following our safety/range rules, please introduce yourself and give them a gentle reminder of the correct procedure to be followed. If you encounter resistance, do not press the matter. Report the incident to one of: Executive Range Officer, Range Safety Officer (RSO) or club Director as soon as possible.
5. Hearing and eye protection are mandatory for shooters and observers.
6. You must be holster trained and certified to use a holster while shooting on CRGC pistol ranges and you must have your certification card visible.
7. The Executive Range Officer, RSOs or club Directors can require anyone who persists in engaging in unsafe practices, violation of range rules/policies, or inappropriate behaviors to leave the property immediately.
8. **Members are obliged to co-operate with and follow the direction of any RSO.** Argumentative or abusive behavior towards the RSOs will not be tolerated. The RSO's ruling regarding conduct on the range is final. If you disagree, you can forward your concern to the Executive Range Officer. However, if you wish to continue to use the range, you must comply with the RSO's direction. If you are unwilling to comply, you must stop using the range.
9. All incidents resulting in a member or guest being asked to leave the property must be reported to the President or the Executive Range Officer.
10. Recommendations for changes/improvements to Range Safety/Range Rules should be forwarded to the Executive Range Officer or a club Director.
11. If you are unsure of the policies, rules or protocols for using the CRGC's ranges or property, ask the RSO, Executive Range Officer or a club Director for clarification. Ignorance is no excuse for not complying with CRGC policies and rules while on club property.

### • Weather

Our ranges are subject to changing weather conditions, which can include fog or smoke. No firing if target visibility is reduced as determined by the RSO.

## **C. General Range Rules. (Cont'd)**

- **Acting Range Safety Officer**

If a duty Range Safety Officer is not present, the first CRGC member to arrive at the range will assume the responsibility of Acting Range Safety Officer or if mutually agreed, the most experienced shooter who is a member may assume that task. The position of Acting Range Safety Officer is to monitor safety procedures and ceasefires. When this person leaves the range, they must hand-off the responsibility to another person.

- **Accidents**

Emergency call boxes linked to a 24 hour call service are located at the 200m, 600 yard, 25 metre ranges and inside the Trap building. These should be used to summon appropriate help if there is an accident or emergency. Internet service is available at the Trap building and action pistol bays. Please refer to any accident as a 'training accident.' All accidents must be reported to the Executive Range Officer and/or CRGC President as soon as possible

## D. Range Use Rules.

- Rule #1 When using any range the red flag on the flag pole at the entrance of the range must be up when the range is in use. The first shooter must put the flag up when arriving at the range before shooting commences, and the last shooter must take the flag down when shooting is finished.
- Rule #2 Firearms **MUST** be carried unloaded, actions open, detachable magazines removed and muzzle pointing up.
- Rule #3 Uncased firearms when not in use **MUST** be unloaded with actions open. Long guns **MUST** be placed barrel pointing up in the racks.
- Rule #4 Loading and unloading is only permitted at the designated firing line when the range is active.
- Rule #5 Shooting is only permitted from the designated firing line.
- Rule #6 Keep the muzzle pointed in a safe direction at all times. Muzzle direction of a firearm on the firing line (loaded or unloaded) **MUST** point downrange. Pistol shooters who are holster trained/certified may use accepted safe procedures for loading, unloading, holstering and unholstering.
- Rule #7 No handling of firearms during a cease-fire.
- Rule #8 Only paper/cardboard targets or approved shrouded steel targets may be used on the Rifle/Pistol and Action shooting/25 Metre Ranges.
- Rule #9 You must not shoot at target frames, range equipment, or at targets on the ground.
- Rule #10 Prohibited, tracer or armor-piercing ammunition is **NOT** permitted on any range. All explosive and pyrotechnic targets are prohibited on any CRGC range .
- Rule #11 No cross firing on other targets. Shoot at targets directly in front of you and ensure that the bullet ends up in an approved backstop area.
- Rule #12 Children under 18 must be under adult supervision at all times.
- Rule #13 When finished, all shooters are required to clean their shooting stations, including spent casings, ejected/unfired ammunition and the targets and debris from the targets they were shooting. Please leave the range cleaner than you found it.
- Rule #14 The consumption of alcohol or cannabis is **NOT** permitted on any range.
- Rule #15 The use of illegal drugs is **NOT** permitted on any CRGC property.
- Rule #16 Any person who appears to be “under the influence” is prohibited from shooting.
- Rule #17 While shooting or attending an active range, it is mandatory to wear hearing and eye protection.
- Rule #18 You must supply your own targets, target backers, staples and stapler, etc.
- Rule #19 No shooting of wildlife on the ranges.

## **D. Range Use Rules. (Cont'd)**

Rule #20 No climbing on berms or backstops.

Rule #21 Uncontrolled shooting is NOT permitted on the ranges. This means all shots must be directed at a target and all shots must be sighted.

Rule #22 Do not place targets on the ground, on overhead baffles or ground baffles.

Rule #23 Any person can call an emergency ceasefire on any range at any time.

Rule #24 "Range Closed/No Shooting/People Downrange" signs MUST be obeyed even if it is not evident why the range is closed.



## **E. Rules Specific to the Action Shooting Range Bays.**

1. These rules are in addition to the General Range Rules and Property Use Rules. Sanctioned events and activities under the supervision of an RSO may have variations.
2. Shooters must be current CRGC members. Guests may shoot under the supervision of a member.
3. Access to the Action Shooting Bays is controlled via locked gates and should be locked up by the last person leaving the range.
4. Before shooting commences in the Action Bays the red range flag at the entrance must be raised. Additionally the red flag in each Action Bay must be raised when shooting is taking place.
5. Vehicles are to be parked in designated areas only. Vehicles are not to be parked in front of or in the bays.
6. You must be holster trained and certified to use a holster while shooting on CRGC pistol ranges, and you must have your certification card visible.
7. On arrival at the range you may uncase your firearm **ONLY** if the range is active. The firearm shall be placed on the table unloaded, action open with magazine removed pointing down range. Holster qualified members may place their handgun in a holster, unloaded, hammer down and magazine removed.
8. If the range is not in use the firearm **MUST** remain cased. Do not touch or manipulate your firearm while the range is closed/inactive and/or there are people downrange.

### **• Conduct of Fire**

1. The firing line for an Action Shooting Bay can be established between the backstop and inside the maximum firing line as marked with separate signage for pistols and pistol calibre carbines (PCCs). Maximum firing line distance is determined by the backstop height. All shooting must be from on or inside this line towards the backstop.
2. Pistol targets must be placed such that a bullet deviating horizontally from the line to the target by up to 14.06 degrees and 10.69 degrees vertically will impact the backstop. Targets for long guns will be placed such that a bullet deviating from the line to the target by up to 2.25 degrees horizontally and 2.25 degrees vertically will impact the backstop. The intended impact point of a bullet on any target shall not be higher than 1.5 metres above the ground. All rounds fired **MUST** be kept within the confines of the range. Absolutely no ground strikes permitted.
3. Action Shooting Bays will generally only be used by members of the Action Shooting and Multigun Sections. The Action Shooting and Multigun Sections will undertake to open the Action Shooting Bays to the general membership twice a month in accordance with the club schedule and subject to the availability of range officers.
4. Action/Multigun shooters will conduct their shooting in accordance with IPSC, USPSA, IDPA or similar nationally or internationally recognized rules.

## **E. Rules Specific to the Action Shooting Bays. (Cont'd)**

5. Certified Range Safety Officers will include those previously certified by the CRGC or IPSC, ISL, IDPA, USPSA, SFC Range Safety Officers and any other similarly qualified person as recognized by the Executive Range Officer.
6. All targets must be placed to ensure that rounds are captured by the backstop. No ground strikes. Targets may not be placed on the ground. No shooting into the side berms.
7. Uncontrolled fire is NOT permitted on any Range. All shots must be directed at a target and all fire must be sighted.
8. Eye and hearing protection is mandatory (including non-shooters) when the range is in use.
9. The consumption of alcohol or cannabis is NOT permitted on any range.
10. Action Shooters must either be a certified Range Safety Officer, be in the company of a certified Range Safety Officer or have successfully completed the Black Badge or equivalent training course.
11. Target pistol shooters must either be a certified Range Safety Officer, be in the company of a certified Range Safety Officer or have successfully completed the CRGC Pistol Course.
12. Only qualified shooters may use a holster to control the pistol; all other shooters must use a table.

### **• Multiple Shooters/Users of a Bay**

1. When more than one person is shooting in a bay at the same time, the following applies:
  - a. One shooter must act as the Range Safety Officer and must be in charge of the conduct of fire (i.e. cease fire, range hot, range clearance and conduct of fire).
  - b. On ceasefire being called, all firearms are to be unloaded, put on the tables with actions open, magazines removed pointed downrange, or unloaded and holstered (if holster trained/certified).
  - c. After the firearms are made safe, they may not be touched until instructed to do so by the Acting RSO.
  - d. After all of the firearms are made safe and are on the table or holstered, the Acting RSO must check that firearms are safe and can then declare the “range safe” and shooters may go forward to fix/replace targets.
2. All shooters in a Bay must fire from the same firing line – shooting from a “staggered” firing line is not permitted.

### **• Cartridge Restrictions**

This is a pistol, pistol calibre carbine, shotgun, black powder, and 22 rimfire cartridge rifle range, i.e., pistol cartridges, 22 rimfire, shotgun shot cartridges and black powder only. No high velocity rifles are allowed.

## **E. Rules Specific to the Action Shooting Range Bays. (Cont'd)**

- **Targets**

1. All targets are to be paper/cardboard or approved shrouded steel targets. Target frames must have wood facing. Do not shoot at target frames.
2. All personal metal targets must be approved by the Executive Range Officer or RSO (if present) prior to use on this range. Steel targets for pistol cartridges must be minimum AR400 steel and must not be shot at from a distance closer than 11 yards. All steel targets must be appropriately shrouded to prevent ricochets.
3. When moving forward to check targets, pistols may be safely holstered (i.e., unloaded and with no magazine inserted) if you are holster qualified. Otherwise, all firearms must be placed on your shooting table, pointed downrange, unloaded with actions open, and magazines removed.

- **Clean Up**

Please leave the range cleaner than you found it. When finished shooting, please clean-up. Pick up spent casings and ejected /unfired ammunition – you may keep your own brass otherwise brass casings go into the brass buckets, steel and shotgun casings go into the garbage containers, take unfired ammunition home or put it into the container provided. Clean up targets and debris from your targets.

## **F. Rules Specific to the 25 Metre Range.**

These rules are in addition to the General Range Rules. Sanctioned events and activities under the supervision of an RSO may have variations.

1. Raise the red flag on the building when range is in use.
2. If more than one person is using the range, one person shall be designated as the RSO to ensure that range rules are enforced and that safety is maintained.
3. Turn on the Red firing line warning lights before commencing shooting. Turn on the Green firing line warning lights during a ceasefire.
4. The range is designed for shooting pistols and pistol calibre rifles only from a standing position. Shooting while sitting is not permitted.
5. Treat every firearm as if it's loaded.
6. Keep all firearms pointed downrange.
7. Shoot only at targets directly in front of you. Cross firing is prohibited.
8. During a ceasefire, place firearms on the shooting bench, unloaded with actions open and magazines removed, barrels pointed downrange and empty chamber indicator inserted. Holster qualified members may place their pistol in a holster, unloaded, magazine out with hammer down/striker forward.
9. Unholstered firearms must not be taken forward of the bench.
10. Hearing and eye protection is mandatory for everyone.
11. Paper targets are to be used and mounted no higher than 1.5 m so that bullets only impact into the backstop. Approved steel targets may be used and will be placed in the designated shrouded bunker.
12. Only the RSO may approach the shooting bench during a ceasefire. Any handling of firearms is strictly prohibited during a ceasefire.
13. Do not shoot or place targets on the barrels, the overhead beam or the vertical posts at the backstop.
14. Follow the appropriate sign-in rules.
15. PCC's may be used on the 25m Range. Shotguns are not permitted on the 25m Range.
16. Put used targets in the garbage, pick up your brass and place in pail. Keep it clean and tidy.

## G. Rules Specific to the 600 Yard Rifle Range.

1. These rules are in addition to the General Range Rules. Sanctioned events and activities under the supervision of an RSO may have variations.
2. Eye and hearing protection is mandatory (including non-shooters) when the range is in use.
3. This range is approved for cartridges up to and including .338 Lapua Magnum. The maximum allowable shooting distance is 600 yards.
4. The firing line is defined as the front of the concrete slab. Use the wooden shooting benches. Drag them to the front of the slab and ensure that all benches in use are in line. Move the benches back after use to keep them dry.
5. Firearms may only be loaded and unloaded at the firing line (i.e., at the wooden shooting bench). Uncasing and casing of firearms is also done at the shooting bench. Holsters are not permitted on this range.

### Targets

6. Targets are to be paper/cardboard or other approved targets such as shrouded approved steel targets. Shooting at target frames, bottles, cans, etc., or anything on the ground is prohibited.
7. Shoot only at targets in front of you. Cross firing is prohibited.
8. **No** shooting of wildlife on the range.
9. Uncontrolled shooting is **NOT** permitted on this range. All shots must be directed at a target, and all shooting must be sighted and **shot from bench height**. Muzzle must be extended past the barrel height limiter.
10. All personal metal targets must be approved by the Executive Range Officer prior to use on this range. For Rifle use this means a minimum of AR500 steel targets. Steel targets are to be hung in the designated shrouded bunker.
11. Approved metal targets **MUST** be a minimum distance of 100 yards for center-fire rifle, and 25 yards for .22 rim fire and pistol caliber cartridges from the designated firing line.
12. The range road gate must be closed whilst the range is active (red firing line lights on).

### Cease Fire Procedure

12. Ceasefires are called by the RSO to allow shooters to venture safely downrange to set up and change their targets. The timing of each ceasefire should be mutually decided between the shooters present.
13. When a cease-fire is called, **ALL** shooters will carry out the following actions:
  - a. All firearms will be unloaded, all ammunition and detachable magazines removed and actions opened. Long guns will be carried muzzle up and placed in the rack. Pistols will be placed on the bench pointing downrange, unloaded, magazines removed/cylinders open with empty chamber indicator inserted.

## **Γ. Rules Specific to the 600 Yard Rifle Range. (Cont'd)**

- b.** Only when a ceasefire is called and all firearms are made safe and checked by the RSO can the red firing line warning lights be turned off. Please wait for the RSO to designate that the range is safe before moving forward of the firing line
- c.** **The handling of firearms is prohibited during a cease-fire.**

## **H. Range Flag and Warning Light System**

14. The 'Range Safety Flag/Warning light System' procedure **MUST** be followed during all range use:

- a.** **RED FLAG - Range is in use. Red flag is raised on building.**
- b.** **Red firing line warning lights are on. Range is active, it is safe to shoot.**
- c.** **Green firing line warning lights are on. Range is inactive, it is NOT safe to shoot.**
- d.** **GREEN FLAG - Range is not in use. Green flag is raised on building. It is NOT safe to shoot.**

## **I. Clean up**

15. Please leave the range cleaner than you found it. When finished shooting, please clean-up:

- a.** Pick up spent casings and ejected/unfired ammunition –You may keep your own brass, otherwise brass casings go into the brass buckets. Steel, aluminum and shotgun casings go into the garbage containers, take unfired ammunition home or put it into the container provided.
- b.** Clean up targets and debris from your targets.

## **H. Rules Specific to the Shotgun Range .**

1. These rules are in addition to the General Range Rules. Sanctioned events and activities under the supervision of an RSO may have variations.
2. The Shotgun Range consists of 4 Trap fields and 1 Skeet field (Skeet under construction). This is a Shotgun only range. 12 gauge is the maximum permitted, 10 gauge and larger are prohibited.
3. Break Action, Semi-Automatic and Pump Action shotguns are all permitted.
4. No shot larger than No. 7 ½ shall be used. Maximum 3 dram powder, 1 1/8 ounces shot and 1300 FPS velocity.
5. Eye and hearing protection is mandatory (including non-shooters) when the range is in use.
6. The action of a firearm shall be open at all times unless actively shooting on a shooting station.
7. No gun shall be loaded until the shooter is on a shooting station.
8. Always keep your muzzle pointed in a safe direction, and any loaded guns must be kept pointed in the direction of fire.
9. Only one cartridge in the gun when shooting Trap. Two cartridges may be loaded when shooting Trap Doubles or Skeet.
10. Only standard Trap and Skeet clay targets are approved.
11. Hand throwers are permitted, hand thrown targets must be directed downrange. Hand throwers must be positioned in line with the trap bunkers.
12. When finished shooting, please clean up your shooting station. Please leave the range cleaner than you found it.

## **I. Rules Specific to the Indoor Range.**

These rules are in addition to the General Range Rules. Sanctioned events and activities under the supervision of an RSO may have variations.

### **Range Safety Officer**

If more than one person is using the range, one person shall be designated as the Range Safety Officer and will ensure that range rules are enforced and that safety is maintained.

### **Range Rules**

1. Red light is to be turned on when the range is in use.
2. During a Ceasefire, firearms on shooting bench are to be unloaded with actions open, magazines removed, empty chamber indicator inserted and barrels pointed down range. Firearms in gun boxes shall be unloaded and fitted with locking devices.
3. All rifles to be in rack with actions open when not in use.
4. Holstered guns are not allowed on this range.
5. No person other than the Range Safety Officer is allowed to approach the shooting bench during a Cease Fire. Any handling of firearms at or behind the firing line is strictly prohibited during a Cease Fire.
6. Hearing and eye protection are mandatory for shooters and observers.
7. Appropriate targets are to be used and mounted so that bullets impact into the backstop.
8. High velocity ammunition, magnum loads and/or jacketed bullets are not permitted.
9. Loaded guns are not to be pointed above the target area.
10. The ventilation system must be used in order to keep the air safe. Proper hygiene should be employed by shooters to mitigate lead contamination.
11. This is your Range. Please help keep it clean and tidy.



**J. Rules Specific to the 200 Metre Range.**

Closed – Under Reconstruction

**K. Rules Specific to the Proposed Black Powder Range.**

Currently in proposal and planning stage

## Appendix A

### Range Descriptions:

#### Outdoor Ranges:

Address:

Quinsam Forest Service Road (Argonaut Road)  
Off Highway 28 between Campbell River and Gold River, BC  
GPS: N49.9636 W-125.4487 (Range Entrance)

#### **200 Metre Range** (CFO R#14).

First outdoor range on left of range road.  
Currently closed and under reconstruction.

#### **600 Yard Range.** (CFO R#13)

Second outdoor range on left of range road.  
18 firing points.  
600 yard rifle, shotgun and pistol range.  
Additional Backstops at 25 metres and 100,200,300,400 and 500 yards.  
Approved firearms : Rifles, shotguns and handguns.  
Maximum approved cartridge : 338 Lapua Magnum template.  
Approved targets : Paper/Cardboard and approved shrouded steel targets.  
Approved Ammunition: FMJ, JHP, Solid , SP, Lead, Coated lead, Plated lead – no incendiary, explosive, tracer, steel jacketed or armour piercing.

#### **Action Shooting Bays** (CFO R#1-6).

Third Range on left of range road.  
Six 25 metre bays intended for Action/Dynamic shooting  
Approved Firearms: Pistols, Pistol Calibre Carbines, Shotgun and Black Powder Firearms.  
Maximum approved cartridge: .357 S&W Magnum template and 12 gauge shot.  
Approved Targets: Paper /Cardboard and approved shrouded steel.  
Approved ammunition : FMJ, Solid, lead, coated lead, plated lead, lead shot – no incendiary, explosive, tracer, steel jacketed or armour piercing.

#### **25 Metre Pistol Range** (CFO R#7).

Situated next to Action Shooting Bays  
Approved Firearms: Pistols, Pistol Calibre Carbines and black powder pistols.

## **Appendix A (Cont'd)**

Maximum approved Cartridge: .357 S&W Magnum template

Approved Targets: Paper/Cardboard and approved shrouded steel targets.

Approved ammunition: FMJ, JHP, Solid, SP, Lead, Coated lead, Plated Lead – no incendiary, explosive, tracer, steel jacketed or armour piercing.

### **Shotgun Range** (CFO R#8-12)

Situated at end of range road.

4 Trap ranges and 1 Skeet range (skeet under construction)

Approved Firearms: Shotguns

Maximum approved Cartridge : 12 gauge maximum.

Approved targets : Clay targets

Approved Ammunition: Maximum No 7 ½ shot, 3 dram powder, 1 1/8 ounce load and 1300 FPS velocity.

### **Indoor Range :** (CFO R#16)

Address:

2600 Quinsam Road, Campbell River, BC.

10 firing positions.

20 yard rifle and pistol range

Approved Firearms : Rifles and pistols

Approved cartridges: Any .22 Rimfire and .32, .38, .45 lead target loads

Approved targets : Paper/Cardboard

Approved Ammunition : Lead ball, coated lead, plated lead – No FMJ,JHP, AP, Incendiary, explosive, steel jacketed or tracer.

## **Appendix B**

### **Nearest Hospital:**

Campbell River and District Hospital  
375 2<sup>nd</sup> Avenue , Campbell River , BC  
#250 286 7100

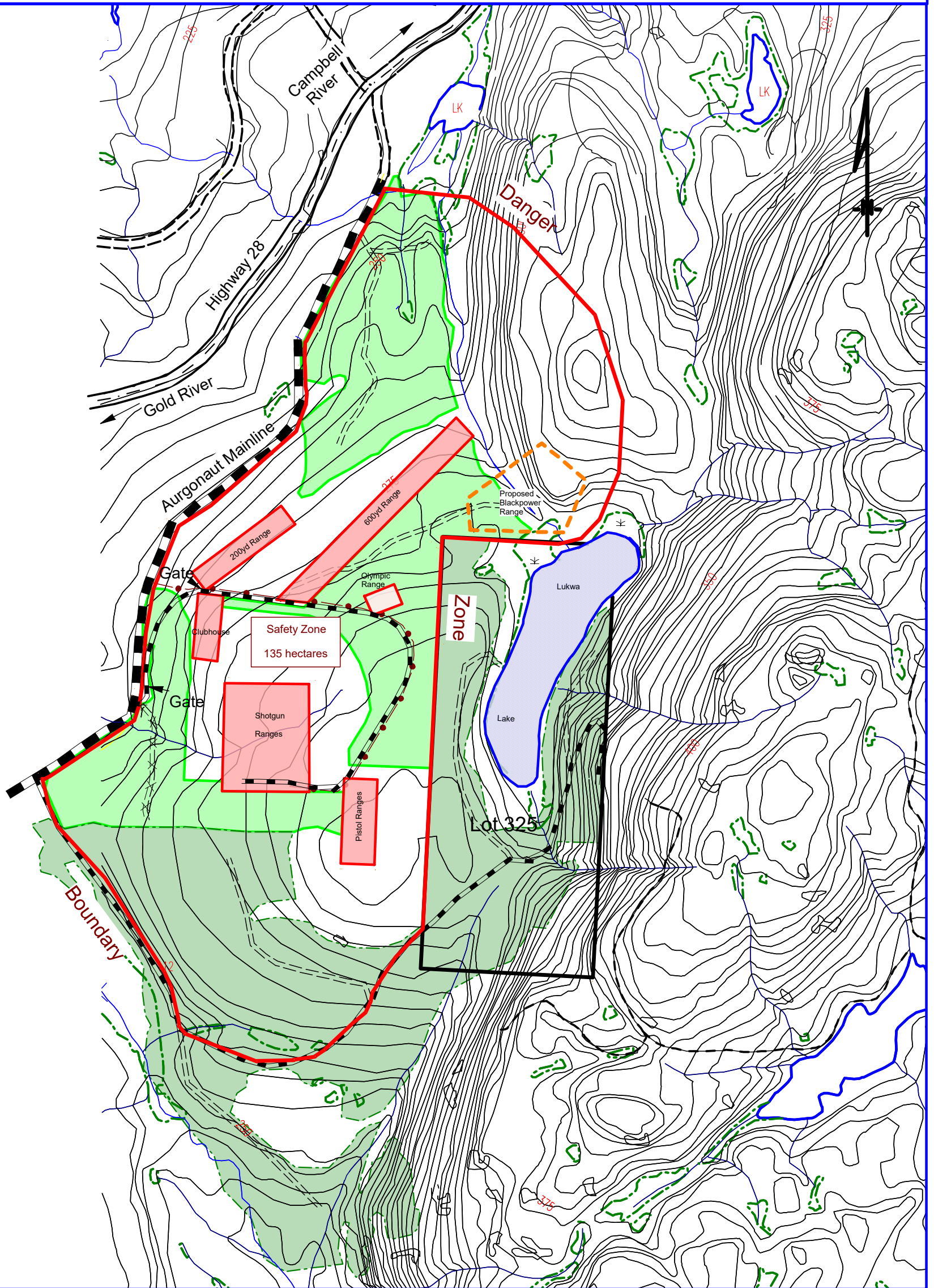
Ambulance, Fire Department, RCMP.  
#911

BC Wildfire Service  
#1 800 663 5555

BC Poison Control Centre  
#1 800 567 8911  
#604 682 5050

# Appendix C.

## Campbell River Gun Club Argonaut Range Facility



Legend			
	Danger Zone		swamp
	Ranges		Recently Logged
	Main Road		Logged, Regenerated
	Secondary Road		Logging Roads
	Powerline		Deactivated Roads
	Creek		Private Land

